

VIAVI OneExpert

ONX-580 Series Feature Enhancements

The latest firmware release for the ONX-580 platform includes enhancements that improve productivity and installation/service quality.

OneCheck Fiber

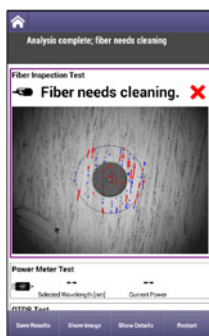
As fiber goes deeper, techs may be tasked with testing a variety of media. OneCheck Fiber enables assurance with step-by-step processes for mistake-proof fiber installations. With each step a clear pass/fail indication is given. Automate fiber inspection with p5000i, and incorporate simplified OTDR measurements with events listed in an easy-to-read diagram. All test results are tied to workorders for easy job submittal and reporting in StrataSync, helping you get the job done correctly the first time.

OneCheck Fiber tests can include:

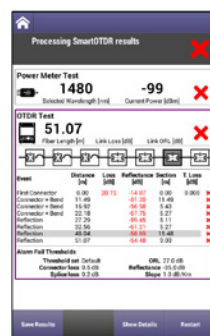
- **Fiber scoping** to ensure clean, reliable connections
- **Optical power level** measurements to ensure that the network is working according to design up to the home demarcation point
- **OTDR tests** to characterize the fiber as provided to the subscriber, or to troubleshoot



Clear pass/fail indicator for each step



Automated inspection eliminates mistakes



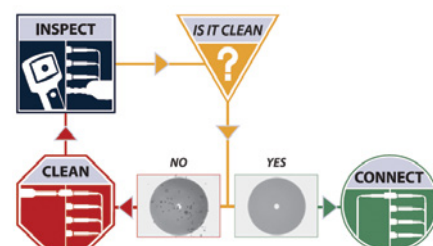
Simple SmartOTDR diagram — no need to interpret traces

Benefits

- More complete characterization of fiber connections at the subscriber premises, ensuring optimal performance and customer satisfaction
- More efficient work flow for faster testing that complies with company/contractor processes
- Complete DSL close-out tests ensure performance to standards and minimize return service calls

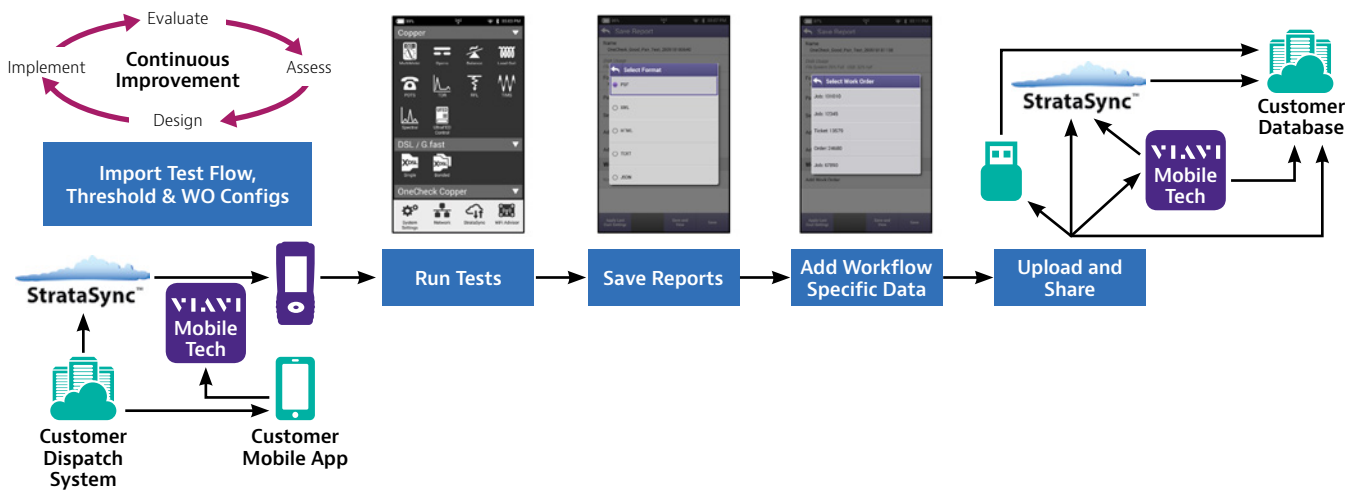


INSPECT *BEFORE* YOU CONNECT



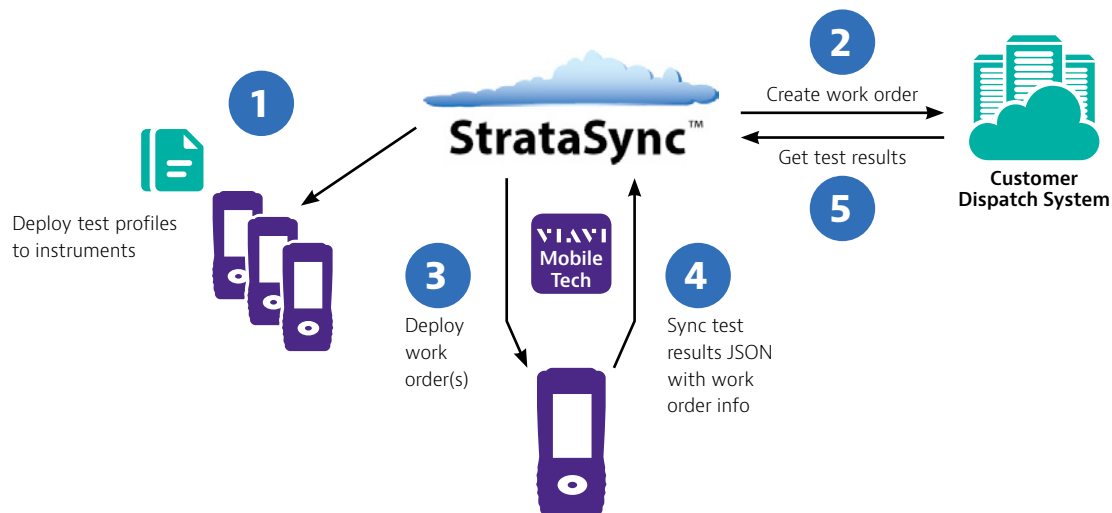
Workflow

With the workflow option in StrataSync, each tech's meter can be updated with a day's workorders, enabling a tech to choose the workorder that matches the current task, perform the prescribed tests, and close it out with data uploaded for management – with a smooth, simple process. Get confirmation that techs and contractors have performed the work with geo-tagged test reports uploaded via the Mobile Tech App.



The test process is smoother and easier for techs with workflow enhanced with smooth work order integration and closeout. The StrataSync workflow option enables simpler compatibility with service operator and contractor work order systems. This means that test flow, pass/fail thresholds, and work orders can be relayed to the ONX, enabling the tech to select an assigned work order and perform tests to prescribed thresholds as guided through the flow. The work order related test data can then be included in a report and uploaded for management.

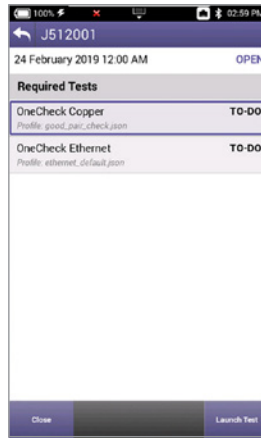
An example workflow is as follows:



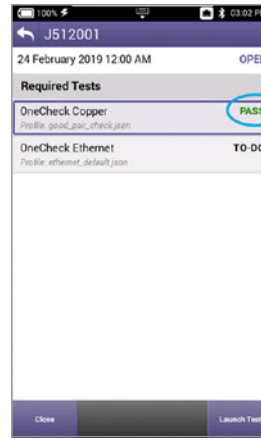
- 1 Deploy profiles/configuration files to instruments via sync (as part of standard procedure)
- 2 Create work orders and reference techId and test profile.
- 3 Deploy work order to instrument (with test profile reference).
- 4 Sync to StrataSync with work order info after testing and saving CDM reports (JSON).
- 5 View test results & associated work order on StrataSync and/or (contractor) transfer to customer.



List of assigned work orders



List of required tests for selected work order



Test status indicated



Work order data report saved



Report example

OneCheck DSL has been enhanced to incorporate an even fuller range of test features, including VoIP, video, and offers variety of speed testing configuration choices. This helps to ensure complete test processes for performance to standards and to minimize return service calls.



Contact Us **+1 844 GO VIAVI**
 (+1 844 468 4284)

To reach the VIAMI office nearest you, visit viavisolutions.com/contacts.

© 2019 VIAMI Solutions Inc. Product specifications and descriptions in this document are subject to change without notice. onx-featureenhance-br-cab-nse-ae 30187698 900 0419